

TEST 2

Ad / Soyad :

Sınıf / No :

ÇÖZ BİTİR

LIFE - 2



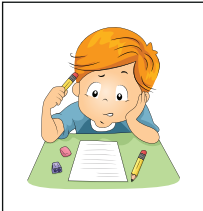
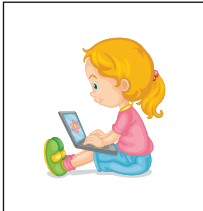
1. Hi! My name is Linda. I'm a student at an elementary school. I go to school on weekdays. At the weekends, I do morning exercises. I rest for a few hours, then I do my homework. I meet with my friends. Then I come back to home.

Which one is incorrect according to the given text?

- A) Her name is Linda.
- B) She goes to school on weekdays.
- C) She does morning exercises on weekdays.
- D) She meets with her friends at the weekends.

2. I watch TV in the evenings.

Which picture shows the sentence given above?

- A) 
- B) 
- C) 
- D) 

3.



After school, Miranda

According to the given picture, which one can we fill in the blank with?

- A) reads a book in her bedroom.
- B) helps her mother in the kitchen.
- C) takes English course.
- D) rests on the sofa.

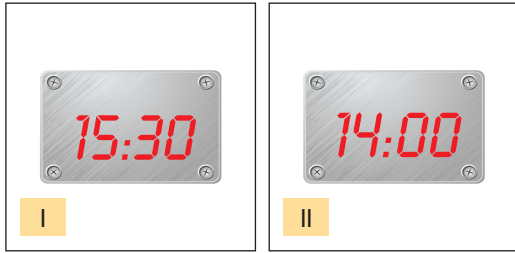
4. Brad: What do you do after school?

Kevin: I go back to home at 16.40 p.m. I have a rest then I do my homework.

What time does he arrive at home?

- A) At five o'clock.
- B) At twenty past four.
- C) At half past five.
- D) At twenty to five.

5.



According to the given clocks, which one is correct?

- A) I. It's half past three p.m.
II. It's two a.m.
- B) I. It's half past three p.m.
II. It's two p.m.
- C) I. It's two a.m.
II. It's nine p.m.
- D) I. It's two a.m.
II. It's half past three a.m.

6.



Emily and Kevin at the weekends.

According to the given picture , which one is correct?

- A) visit their grandparents
- B) help their mother
- C) listen to music
- D) have dinner

Answer the questions (7 - 8) according to the chart given below.

| | Maths | English |
|-------|-------|---------|
| Murat | 10.45 | 16.15 |
| Aslı | 11.30 | 14.10 |

7. Which one is true according to the given chart?

- A) Murat has got English at a quarter past five a.m.
- B) Aslı has got Maths at half past two.
- C) Aslı has got English at a quarter to four.
- D) Murat has got Maths at a quarter to eleven.

8. Which one is incorrect according to the given chart?

- A) Aslı has got Maths at half past eleven a.m.
- B) Aslı has got English at ten past two p.m.
- C) Aslı has got English at two past ten p.m.
- D) Murat has got English at a quarter past four p.m.

9. 1. What time do you go to bed?
2. When do you go on a holiday?
3. Where do you live?
4. Where do you go after school?

- a. I live in İstanbul.
- b. I sleep at ten o'clock.
- c. I go on a holiday in July.

Match the questions with the answers and odd one out.

- A) 4 B) 3 C) 2 D) 1

TEST 10

Ad / Soyad :

Sınıf / No :

ÇÖZ BİTİR

WEATHER AND EMOTIONS - I

(1 - 4 : For these questions, choose the best option to fill in the blanks.)

1. Dennis: The weather is It's -15 degrees celcius.

- A) fabulous. B) sunny.
C) freezing. D) hot.

2.  There is lightning outside. I'm at home and I feel I don't like it.

- A) anxious. B) great.
C) energetic. D) glad.

3. İstanbul is 6°C and İzmir is 14°C. İstanbul is than İzmir.

- A) not colder B) colder
C) rainer D) hotter

4. Ann: I feel I want to sleep.

- A) energetic. B) anxious.
C) happy. D) sleepy.

5.

| | |
|---------|---|
| Rome |  |
| Toronto |  |
| Paris |  |
| Athens |  |

Which one is correct according to the given chart?

- A) It's sunny in Toronto.
B) It's foggy in Athens.
C) It's windy in Paris.
D) It's not cloudy in Rome.

Weather And Emotions



Which one is correct according to the given picture?

- A) It's cold and snowy.
- B) It's dry and foggy.
- C) It's hot and sunny.
- D) It's warm and rainy.

7. There are some photos from our holiday. We are in a nice hotel in Alanya. There are trees everywhere. The weather is hot and sunny. We like swimming.

Which picture isn't related to the paragraph?



What's the weather like in Mersin?

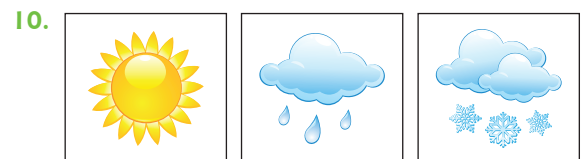
- A) It's snowy.
- B) It's rainy.
- C) It's chilly.
- D) It's sunny.



..... Because it's winter.

Fill in the blank according to the picture and circle the correct one.

- A) I often wear my swimsuit.
- B) I usually wear my slippers.
- C) I usually wear my coat and scarf.
- D) I wear my hat and sunglasses.



Match the pictures with the options and odd one out.

- A) rainy
- B) snowy
- C) foggy
- D) sunny

TEST 24

Ad / Soyad :

Sınıf / No :

ÇÖZ BİTİR

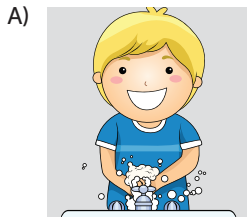
SAVING THE PLANET - I

1. • We should / shouldn't use ozone - friendly perfumes.
 • We should / shouldn't use private cars.
 • We should / shouldn't plant trees.
 • We should / shouldn't use animals in experiments.
 • We should / shouldn't cut trees.

How many "should" and "shouldn't" can we choose?

| | should | shouldn't |
|----|--------|-----------|
| A) | 2 | 3 |
| B) | 1 | 4 |
| C) | 3 | 2 |
| D) | 4 | 1 |

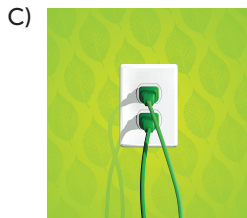
2. Which picture - sentence matching is incorrect?



We should turn off the taps.



We should keep off the grass.



Don't unplug the electrical devices.



We should use recyclable products.

3.



What can we do according to the picture given above ?

- A) We can put the dead batteries out.
 B) We can save the animals in danger.
 C) We can use less chemicals.
 D) We can ride our bicycles to the places nearby.

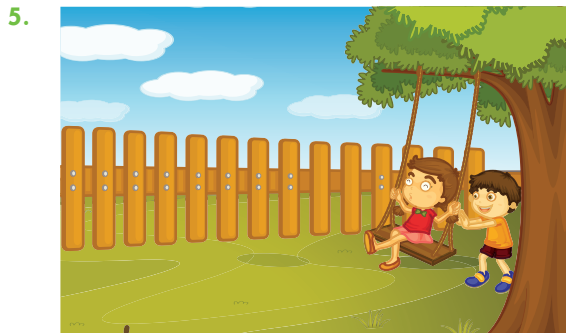
4.

| | |
|--|--|
| We should use both sides of a paper. | |
| We should not use public transportation. | |
| We shouldn't use glass and paper containers. | |

If we put √ or X into the boxes, which option is correct?

| | | | | | | | | | | | | | | | |
|--|---|---|---|--|---|---|---|--|---|---|---|--|---|---|---|
| A) <table border="1"><tr><td>X</td></tr><tr><td>√</td></tr><tr><td>√</td></tr></table> | X | √ | √ | B) <table border="1"><tr><td>√</td></tr><tr><td>X</td></tr><tr><td>X</td></tr></table> | √ | X | X | C) <table border="1"><tr><td>√</td></tr><tr><td>√</td></tr><tr><td>√</td></tr></table> | √ | √ | √ | D) <table border="1"><tr><td>X</td></tr><tr><td>X</td></tr><tr><td>√</td></tr></table> | X | X | √ |
| X | | | | | | | | | | | | | | | |
| √ | | | | | | | | | | | | | | | |
| √ | | | | | | | | | | | | | | | |
| √ | | | | | | | | | | | | | | | |
| X | | | | | | | | | | | | | | | |
| X | | | | | | | | | | | | | | | |
| √ | | | | | | | | | | | | | | | |
| √ | | | | | | | | | | | | | | | |
| √ | | | | | | | | | | | | | | | |
| X | | | | | | | | | | | | | | | |
| X | | | | | | | | | | | | | | | |
| √ | | | | | | | | | | | | | | | |

Saving The Planet



What do you say to warn them?

- A) Don't hang up swings.
- B) Break the branches of trees.
- C) Hang up swings.
- D) Step on the grass.

6. We should the water pollution.
Fill in the blank and circle the correct one.

- A) increase
- B) reduce
- C) waste
- D) use

7.



What are they doing?

- A) They are watering the flowers.
- B) They are picking up garbage.
- C) They are planting a tree.
- D) They are cutting the tree.



Which one is correct according to the given picture?

- A) We should use plastic bags.
- B) We should do nuclear experiments.
- C) We should give harm to the ozone layer.
- D) We should recycle.

(9 - 10 : For these questions, choose the best option to fill in the blanks.)

9. Cars' exhaust gases

- A) save our environment.
- B) protect the animals.
- C) waste energy.
- D) pollute the air.

10. Jessica:

Mark: We should use recyclable materials and save the environment.

- A) What are the pollutants of the environment?
- B) What should we do to protect the environment?
- C) How can we give harm to Earth?
- D) What do the trees produce?